

20

DIFFUSION AND OSMOSIS
PRE-LAB

Name: _____

Date: _____

Total Points: 35

Due Date: _____

INTRODUCTION

Dialysis tubing allows molecules to diffuse through microscopic pores in the tubing. Molecules smaller than the pores can diffuse through the dialysis membrane along their concentration gradients. Molecules larger than the pore size are prevented from crossing the dialysis membrane.

Answer questions in complete sentences. For problems, show equations and work with units and appropriate significant figures.

PART 1A

1. Predict whether or not each of these is expected to pass through the dialysis membrane. (4 points)

Water _____

Glucose _____

IKI _____

Starch _____

2. How will you know whether the iodine solution has crossed the dialysis membrane? (2 points)

PART 1B

In the following situations, assume the sucrose cannot diffuse through the dialysis membrane.

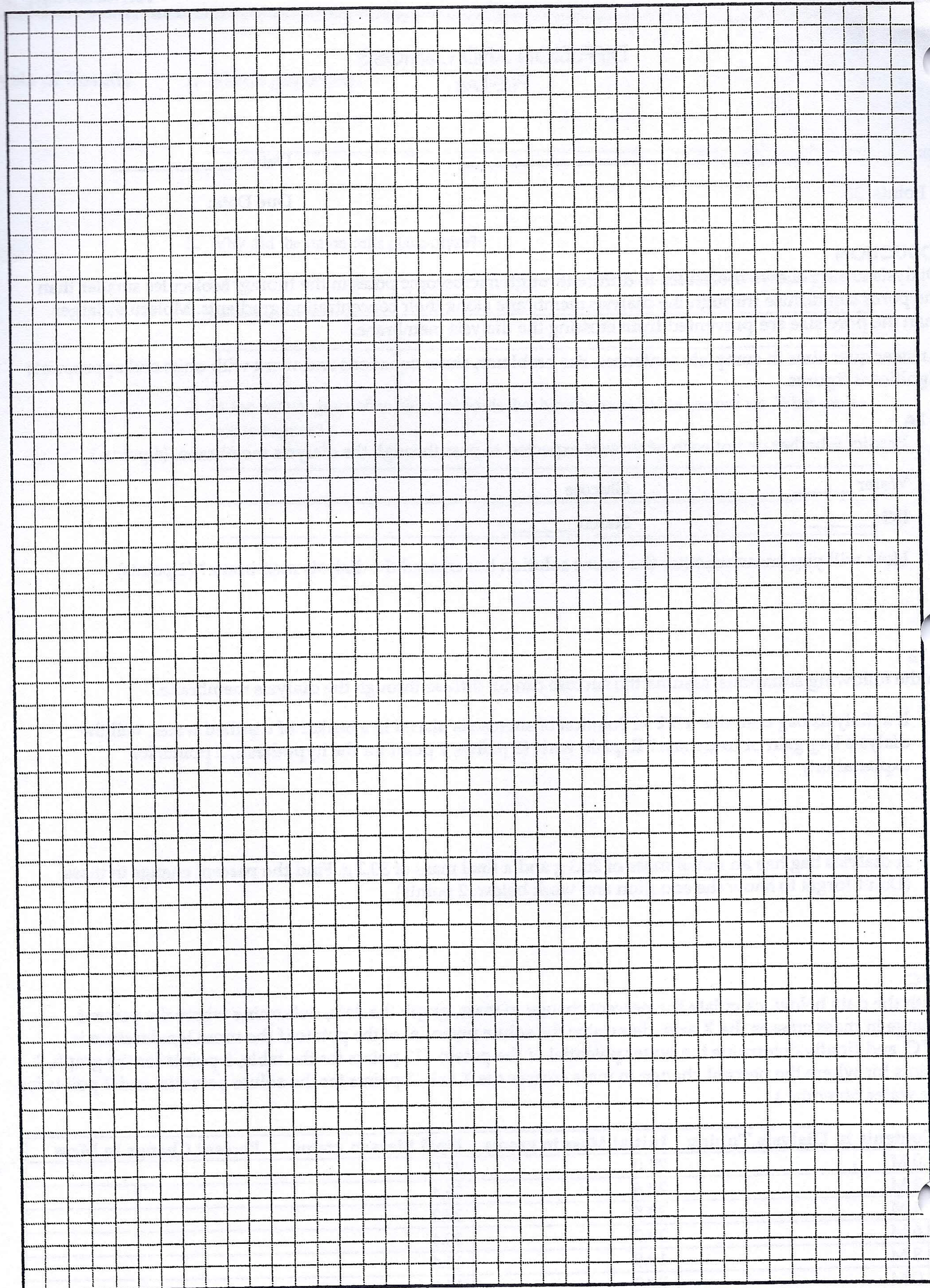
3. If a dialysis bag contains a 0.2 M Solution of sucrose is placed in a beaker of distilled water, will the dialysis bag gain or lose mass? Explain why. (3 points: 1 point for the hypothesis, 2 points for explanation)
4. A dialysis bag has an initial mass of 26.3 g and a final mass of 30.2 g. Find the percent change in mass. (Don't forget to show the equation and work below. 2 points)

PART 1C

With the data below, calculate the percent change in mass, graph the data, determine where the percent change in mass crosses the X axis, determine the solute potential of the potato if the room temperature is 24°C, and finally determine the water potential of the potato. (12 points for the table, 5 points for the graph, 2 points for where the percent change in mass crosses the X axis, 3 points for the solute potential and 2 points for the water potential.)

Contents in Dialysis Tubing	Initial Mass in grams	Final Mass in grams	Percent Change in Mass
0.0 M	22.0	27.0	
0.2 M	24.6	26.4	
0.4 M	23.5	23.2	
0.6 M	23.7	20.4	
0.8 M	19.9	15.6	
1.0 M	21.3	16.2	

16 :



LABORATORY 1. DIFFUSION AND OSMOSIS

OVERVIEW

In this laboratory you will investigate the processes of diffusion and osmosis in a model membrane system. You will also investigate the effect of solute concentration on water potential as it relates to living plant tissues.

OBJECTIVES

Before doing this laboratory you should understand:

- the mechanisms of diffusion and osmosis and their importance to cells;
- the effects of solute size and concentration gradients on diffusion across selectively permeable membranes;
- the effects of a selectively permeable membrane on diffusion and osmosis between two solutions separated by the membrane;
- the concept of water potential;
- the relationship between solute concentration and pressure potential and the water potential of a solution; and
- the concept of molarity and its relationship to osmotic concentration.

After doing this laboratory you should be able to:

- measure the water potential of a solution in a controlled experiment;
- determine the osmotic concentration of living tissue *or* an unknown solution from experimental data;
- describe the effects of water gain or loss in animal and plant cells; and
- relate osmotic potential to solute concentration and water potential.

INTRODUCTION

Many aspects of the life of a cell depend on the fact that atoms and molecules have kinetic energy and are constantly in motion. This kinetic energy causes molecules to bump into each other and move in new directions. One result of this molecular motion is the process of diffusion.

Diffusion is the random movement of molecules from an area of higher concentration of those molecules to an area of lower concentration. For example, if one were to open a bottle of hydrogen sulfide (H_2S has the odor of rotten eggs) in one corner of a room, it would not be long before someone in the opposite corner would perceive the smell of rotten eggs. The bottle contains a higher concentration of H_2S molecules than the room does and, therefore, the H_2S gas diffuses from the area of higher concentration to the area of lower concentration. Eventually a dynamic equilibrium will be reached; the concentration of H_2S will be approximately equal throughout the room and no net movement of H_2S will occur from one area to the other.

Osmosis is a special case of diffusion. Osmosis is the diffusion of water through a selectively permeable membrane (a membrane that allows for diffusion of certain solutes and water) from a region of higher water potential to a region of lower water potential. Water potential is the measure of free energy of water in a solution.

Diffusion and osmosis do not entirely explain the movement of ions or molecules into and out of cells. One property of a living system is active transport. This process uses energy from ATP to move substances through the cell membrane. Active transport usually moves substances against a concentration gradient, from regions of low concentration of that substance into regions of higher concentration.

EXERCISE 1A: Diffusion

In this experiment you will measure diffusion of small molecules through dialysis tubing, an example of a selectively permeable membrane. Small solute molecules and water molecules can move freely through a selectively permeable membrane, but larger molecules will pass through more slowly, or perhaps not at all. The movement of a solute through a selectively permeable membrane is called **dialysis**. The size of the minute pores in the dialysis tubing determines which substances can pass through the membrane.

A solution of glucose and starch will be placed inside a bag of dialysis tubing. Distilled water will be placed in a beaker, outside the dialysis bag. After 30 minutes have passed, the solution inside the dialysis tubing and the solution in the beaker will be tested for glucose and starch. The presence of glucose will be tested with Benedict's solution or Testape®. The presence of starch will be tested with Lugol's solution, (Iodine Potassium-Iodide or IKI).

Procedure

1. Obtain a 30-cm piece of 2.5-cm dialysis tubing that has been soaking in water. Tie off one end of the tubing to form a bag. To open the other end of the bag, rub the end between your fingers until the edges separate.
2. Place 15 mL of the 15% glucose/1% starch solution in the bag. Tie off the other end of the bag, leaving sufficient space for the expansion of the contents in the bag. Record the color of the solution in Table 1.1.
3. Test the 15% glucose/1% starch solution for the presence of glucose. Your teacher may have you do a Benedict's test or use glucose Testape®. Record the results in Table 1.1.
4. Fill a 250-mL beaker or cup two-thirds full with distilled water. Add approximately 4 mL of Lugol's solution to the distilled water and record the color of the solution in Table 1.1. Test this solution for glucose and record the results in Table 1.1.
5. Immerse the bag in the beaker of solution.
6. Allow your set-up to stand for approximately 30 minutes or until you see a distinct color change in the bag or in the beaker. Record the final color of the solution in the bag, and of the solution in the beaker, in Table 1.1.
7. Test the liquid in the beaker and in the bag for the presence of glucose. Record the results in Table 1.1.

Table 1.1

	Initial Contents	Solution Color		Presence of Glucose	
		Initial	Final	Initial	Final
Bag	15% glucose & 1% starch				
Beaker	H ₂ O + IKI				

3 • LABORATORY 1

Analysis of Results

1. Which substance(s) are entering the bag and which are leaving the bag? What experimental evidence supports your answer?

2. Explain the results you obtained. Include the concentration differences and membrane pore size in your discussion.

3. **Quantitative data** uses numbers to measure observed changes. How could this experiment be modified so that quantitative data could be collected to show that water diffused into the dialysis bag?

4. Based on your observations, rank the following by relative size, beginning with the smallest: glucose molecules, water molecules, IKI molecules, membrane pores, starch molecules.

4 • LABORATORY 1

5. What results would you expect if the experiment started with a glucose and IKI solution inside the bag and only starch and water outside? Why?

EXERCISE 1B: Osmosis

In this experiment you will use dialysis tubing to investigate the relationship between solute concentration and the movement of water through a selectively permeable membrane by the process of osmosis.

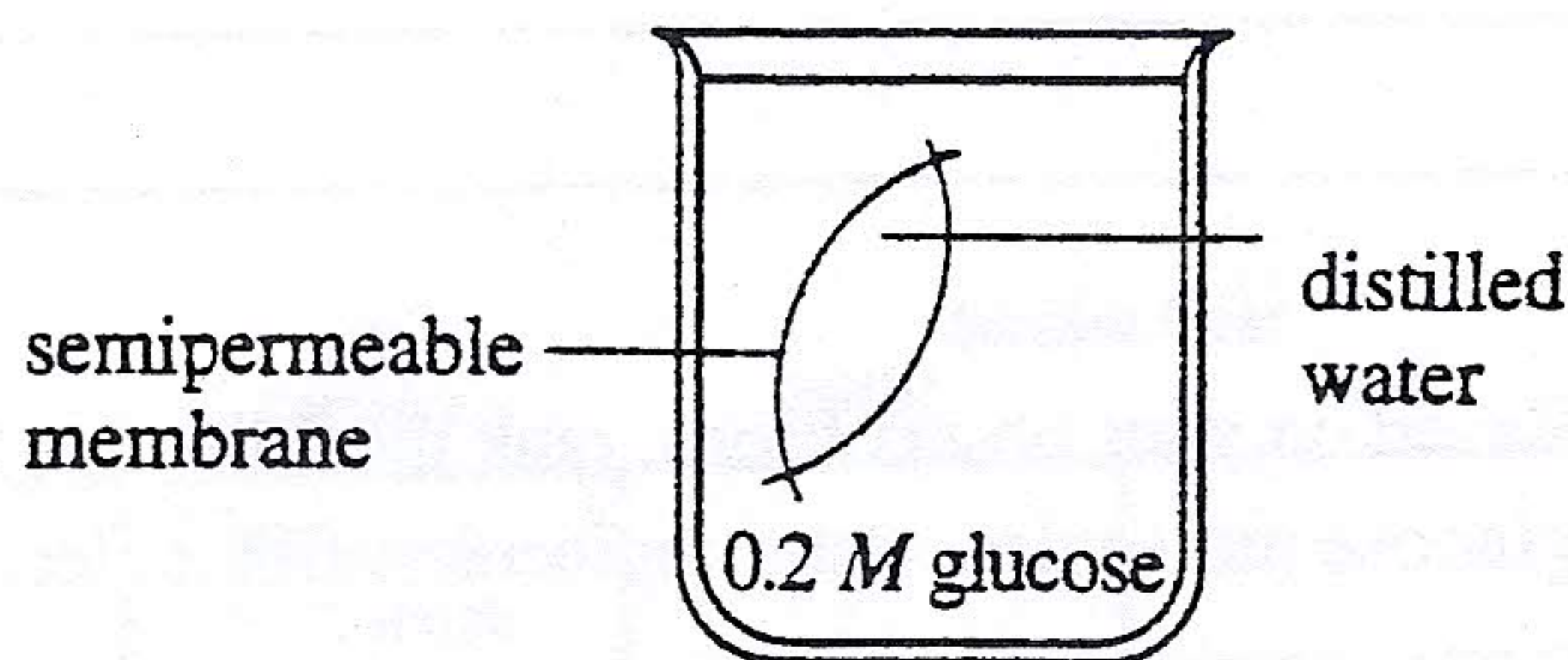
When two solutions have the same concentration of solutes, they are said to be **isotonic** to each other (iso means same, -ton means condition, -ic means pertaining to). If the two solutions are separated by a selectively permeable membrane, water will move between the two solutions, but there will be no **net** change in the amount of water in either solution.

If two solutions differ in the concentration of solutes that each has, the one with more solute is **hypertonic** to the one with less solute (hyper means over, more than). The solution that has less solute is **hypotonic** to the one with more solute (hypo means under or less than). These words can only be used to compare solutions.

Now consider two solutions separated by a selectively permeable membrane. The solution that is hypertonic to the other must have more solute and therefore less water. At standard atmospheric pressure, the water potential of the hypertonic solution is less than the water potential of the hypotonic solution, so the **net** movement of water will be from the hypotonic solution into the hypertonic solution.

Label the sketch below to indicate which solution is hypertonic, which is hypotonic, and use arrows to show the initial **net** movement of water.

Figure 1.1



Procedure

1. Obtain six 30-cm strips of presoaked dialysis tubing.

2. Tie a knot in one end of each piece of dialysis tubing to form six bags. Pour approximately 25 mL of each of the following solutions into separate bags:

- a) Distilled water
- b) 0.2 M sucrose
- c) 0.4 M sucrose
- d) 0.6 M sucrose
- e) 0.8 M sucrose
- f) 1.0 M sucrose

Remove most of the air from each bag by drawing the dialysis bag between two fingers. Tie off the other end of the bag. Leave sufficient space for the expansion of the contents in the bag. (The solution should fill only about one-third to one-half of the piece of tubing.)

3. Rinse each bag gently with distilled water to remove any sucrose spilled during filling.
4. Carefully blot the outside of each bag and record in Table 1.2 the initial mass of each bag, expressed in grams.
5. Fill six 250-mL beakers or cups two-thirds full with distilled water.
6. Immerse each bag in one of the beakers of distilled H₂O and label the beaker to indicate the molarity of the solution in the dialysis bag. *Be sure to completely submerge each bag.*
7. Let them stand for 30 minutes.
8. At the end of 30 minutes remove the bags from the water. Carefully blot and determine the mass of each bag.
9. Record your group's data in Table 1.2. Obtain data from the other lab groups in your class to complete Table 1.3: Class Data.

Table 1.2: Dialysis Bag Results: Individual Data

Contents in Dialysis Bag	Initial Mass	Final Mass	Mass Difference	Percent Change in Mass*
a) Distilled Water				
b) 0.2 M				
c) 0.4 M				
d) 0.6 M				
e) 0.8 M				
f) 1.0 M				

* To calculate:

$$\text{Percent Change in Mass} = \frac{\text{Final Mass} - \text{Initial Mass}}{\text{Initial Mass}} \times 100$$

Table 1.3: Dialysis Bag Results: Class Data

Percent Change in Mass of Dialysis Bags

	Group 1	Group 2	Group 3	Group 4	Group 5	Group 6	Group 7	Group 8	Total	Class Average
Distilled Water										
0.2 M										
0.4 M										
0.6 M										
0.8 M										
1.0 M										
Team Members										

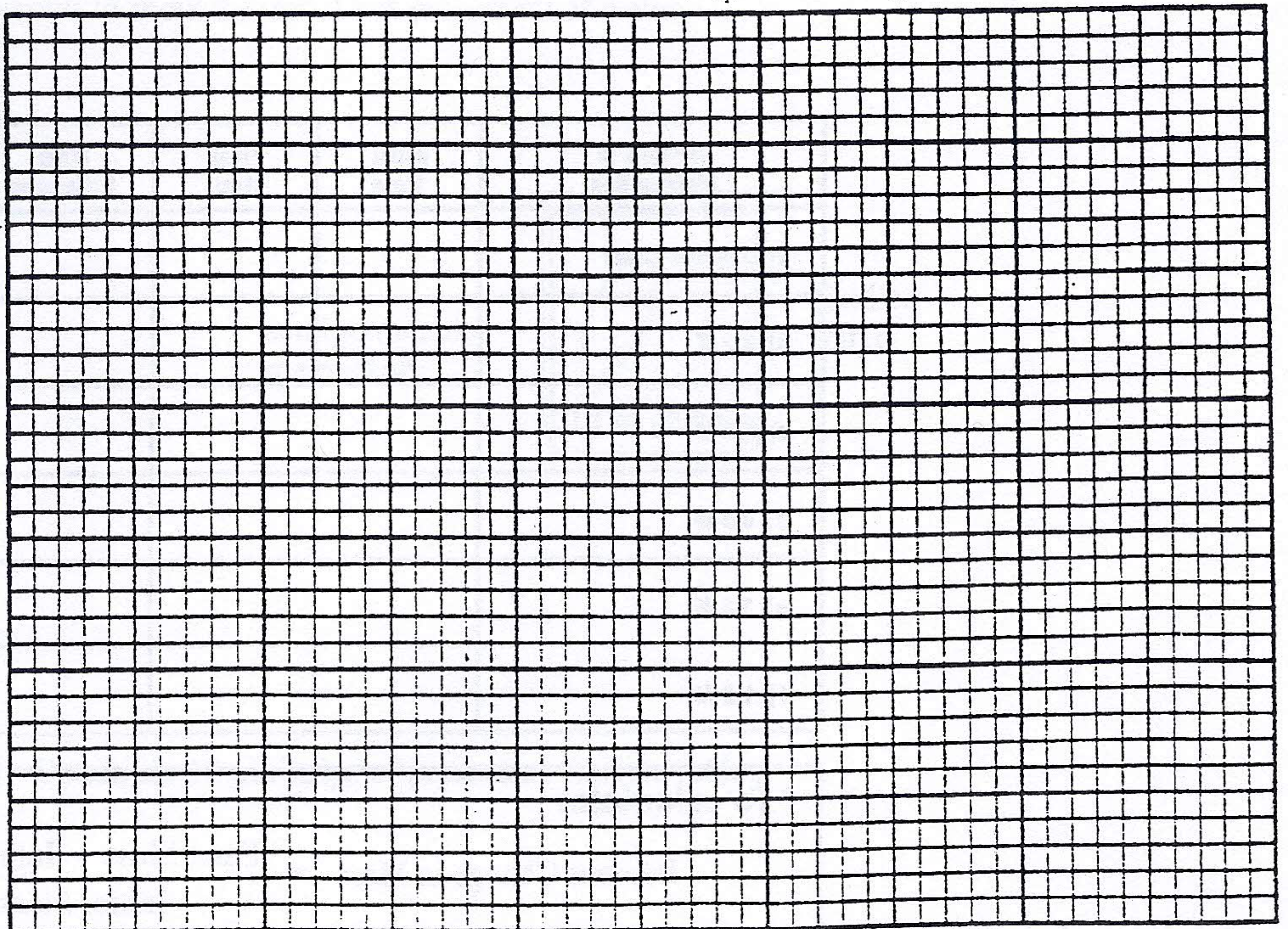
10. Graph the results for both your individual data and class average on the following graph. For this graph you will need to determine the following:

a. The *independent* variable _____
Use this to label the horizontal (X) axis.

b. The *dependent* variable _____
Use this to label the vertical (Y) axis

Graph Title: _____

Graph 1.1



Analysis of Results

1. Explain the relationship between the change in mass and the molarity of sucrose within the dialysis bags.

2. Predict what would happen to the mass of each bag in this experiment if all the bags were placed in a 0.4 M sucrose solution instead of distilled water. Explain your response.

3. Why did you calculate the percent change in mass rather than simply using the change in mass?

4. A dialysis bag is filled with distilled water and then placed in a sucrose solution. The bag's initial mass is 20 g, and its final mass is 18 g. Calculate the percent change of mass, showing your calculations in the space below.

5. The sucrose solution in the beaker would have been _____ to the distilled water in the bag? (Circle the word that best completes the sentence.)

isotonic hypertonic hypotonic

EXERCISE 1C: Water Potential

In this part of the exercise you will use potato cores placed in different molar concentrations of sucrose in order to determine the water potential of potato cells. First, however, we will explore what is meant by the term "water potential."

Botanists use the term water potential when predicting the movement of water into or out of plant cells. Water potential is abbreviated by the Greek letter psi (Ψ) and it has two components; a physical pressure component, pressure potential Ψ_p , and the effects of solutes, solute potential Ψ_s .

Ψ	=	Ψ_p	+	Ψ_s
Water potential	=	Pressure potential	+	Solute potential

Water will always move from an area of higher water potential (higher free energy; more water molecules) to an area of lower water potential (lower free energy; fewer water molecules). Water potential, then, measures the tendency of water to leave one place in favor of another place. You can picture the water diffusing "down" a water potential gradient.

Water potential is affected by two physical factors. One factor is the addition of solute which lowers the water potential. The other factor is pressure potential (physical pressure). An increase in pressure raises the water potential. By convention, the water potential of pure water at atmospheric pressure is defined as being zero ($\Psi = 0$). For instance, it can be calculated that a 0.1-M solution of sucrose at atmospheric pressure ($\Psi_p = 0$) has a water potential of -2.3 bars due to the solute ($\Psi = -2.3$).¹

Movement of H₂O into and out of a cell is influenced by the solute potential (relative concentration of solute) on either side of the cell membrane. If water moves out of the cell, the cell will shrink. If water moves into an animal cell, it will swell and may even burst. In plant cells, the presence of a cell wall prevents cells from bursting as water enters the cells, but pressure eventually builds up inside the cell and affects the net movement of water. As water enters a dialysis bag or a cell with a cell wall, pressure will develop inside the bag or cell as water pushes against the bag or cell wall. The pressure would cause, for example, the water to rise in an osmometer tube or increase the pressure on a cell wall. It is important to realize that water potential and solute concentration are inversely related. The addition of solutes lowers the water potential of the system. In summary, solute potential is the effect that solutes have on a solution's overall water potential.

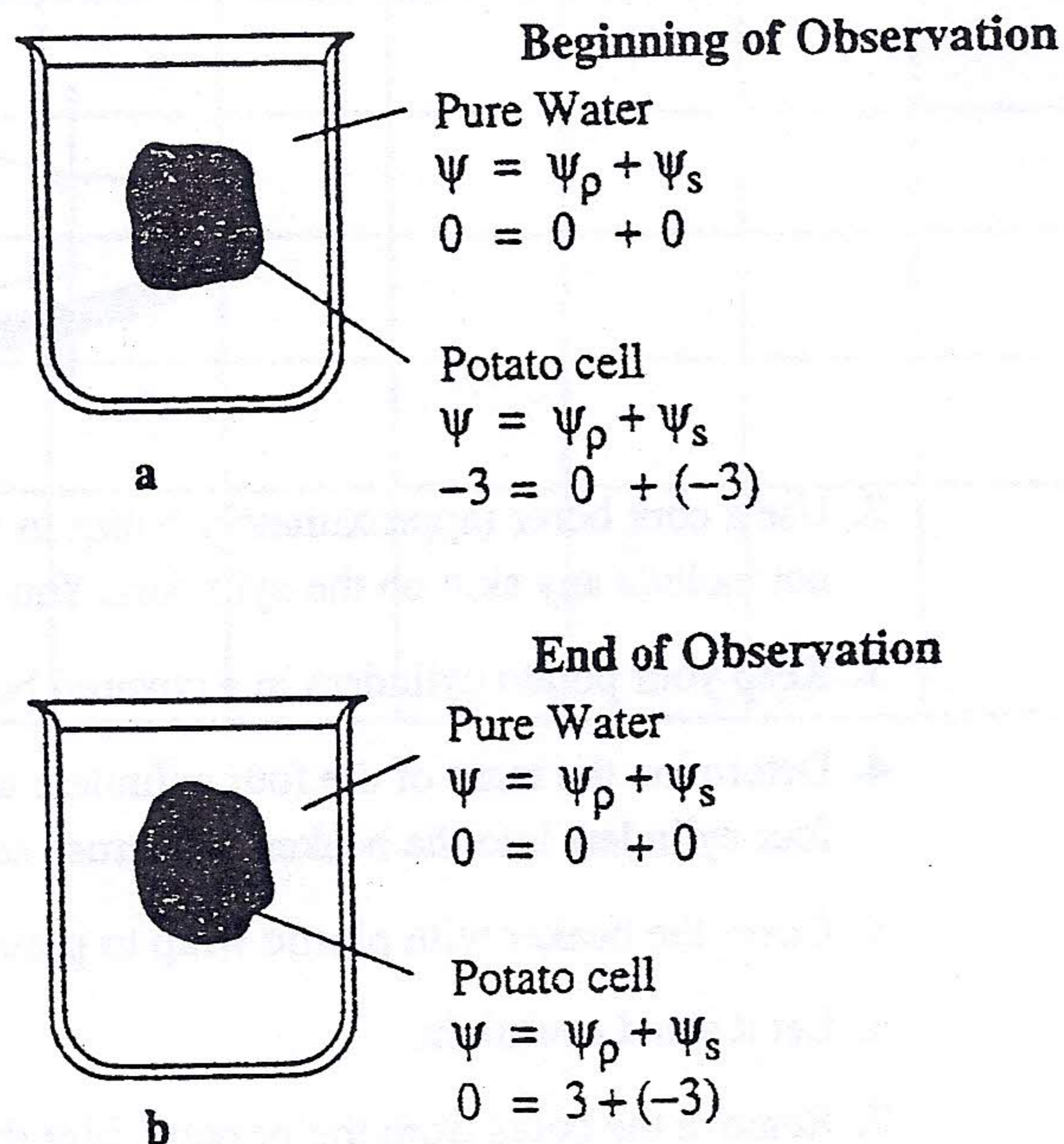
Movement of H₂O into and out of a cell is also influenced by the pressure potential (physical pressure) on either side of the cell membrane. Water movement is directly proportional to the pressure on a system. For example, pressing on the plunger of a water-filled syringe causes the water to exit via any opening. In plant cells this physical pressure can be exerted by the cell pressing against the partially elastic cell wall. Pressure potential is usually positive in living cells; in dead xylem elements it is often negative.

¹ A bar is a metric measure of pressure, measured with a barometer, that is about the same as 1 atmosphere. Another measure of pressure is the megapascal (MPa). [1 MPa = 10 bars.]

It is important for you to be clear about the numerical relationships between water potential and its components, pressure potential and solute potential. The water potential value can be positive, zero, or negative. Remember that water will move across a membrane in the direction of the lower water potential. An increase in pressure potential results in a more positive value, and a decrease in pressure potential (tension or pulling) results in a more negative value. In contrast to pressure potential, solute potential is always negative; since pure water has a water potential of zero, any solutes will make the solution have a lower (more negative) water potential. Generally, an increase in solute potential makes the water potential value more negative and an increase in pressure potential makes the water potential more positive.

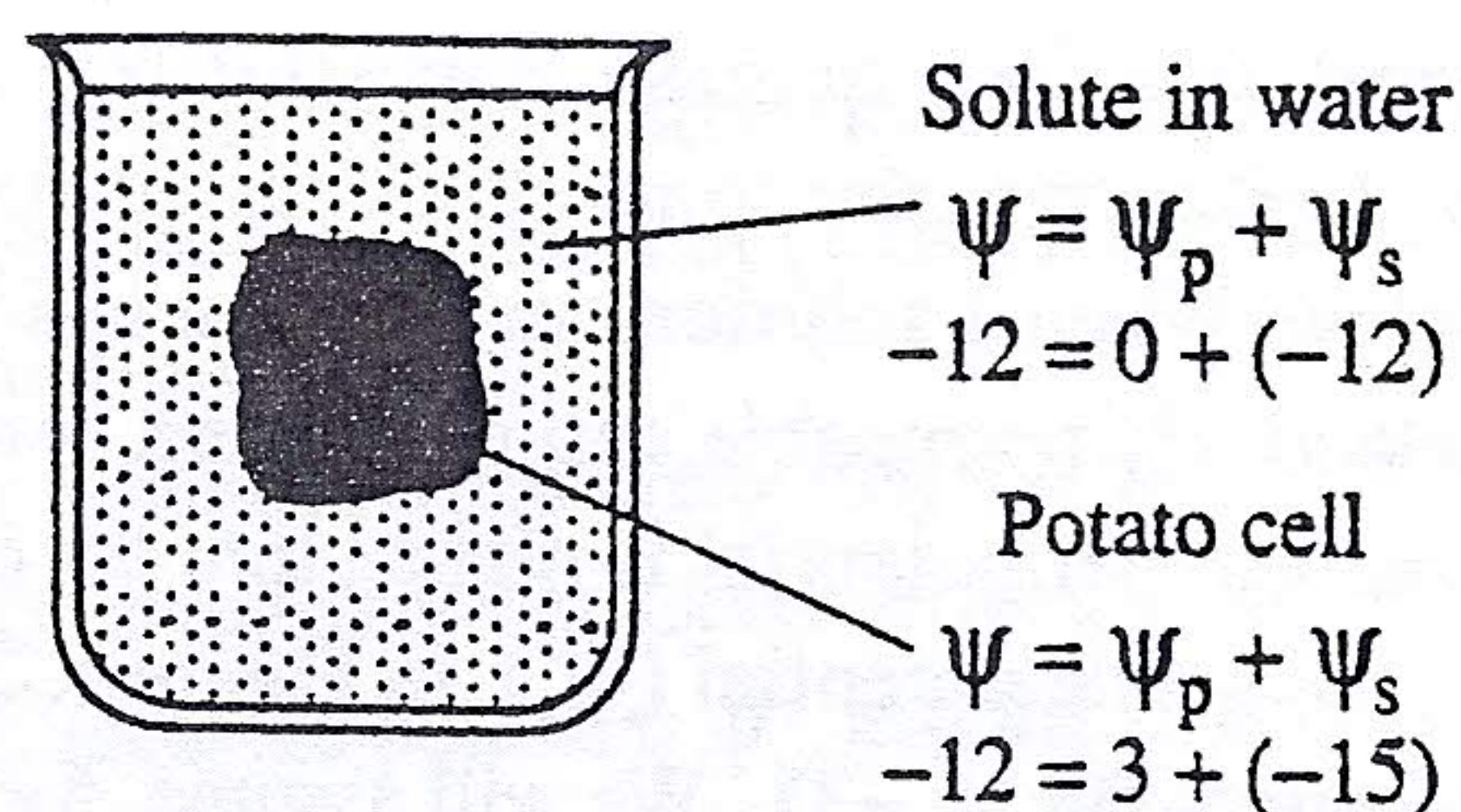
To illustrate the concepts discussed above, we will look at a sample system using the figures below. When a solution, such as that inside a potato cell, is separated from pure water by a selectively permeable cell membrane, water will move (by osmosis) from the surrounding water where water potential is higher, into the cell where water potential is lower (more negative) due to the solute potential (ψ_s). In Figure 1.2a the pure water potential ($\psi = 0$) and the solute potential ($\psi_s = -3$). We will assume, for purposes of explanation, that the solute is not diffusing out of the cell. By the end of the observation, the movement of water into the cell causes the cell to swell and the cell contents push against the cell wall to produce an increase in pressure potential (turgor) ($\psi_p = 3$). Eventually, enough turgor pressure builds up to balance the negative solute potential of the cell. When the water potential of the cell equals the water potential of the pure water outside the cell (ψ of cell = ψ of pure water = 0), a dynamic equilibrium is reached and there will be no NET water movement (Figure 1.2b).

Figure 1.2



If you were to add solute to the water outside the potato cells, the water potential of the solution surrounding the cells would decrease. It is possible to add just enough solute to the water so that the water potential outside the cell is the same as the water potential inside the cell. In this case, there will be no net movement of water. This does not mean, however, that the solute concentrations inside and outside the cell are equal, because water potential inside the cell results from the combination of both pressure potential and solute potential.

Figure 1.3



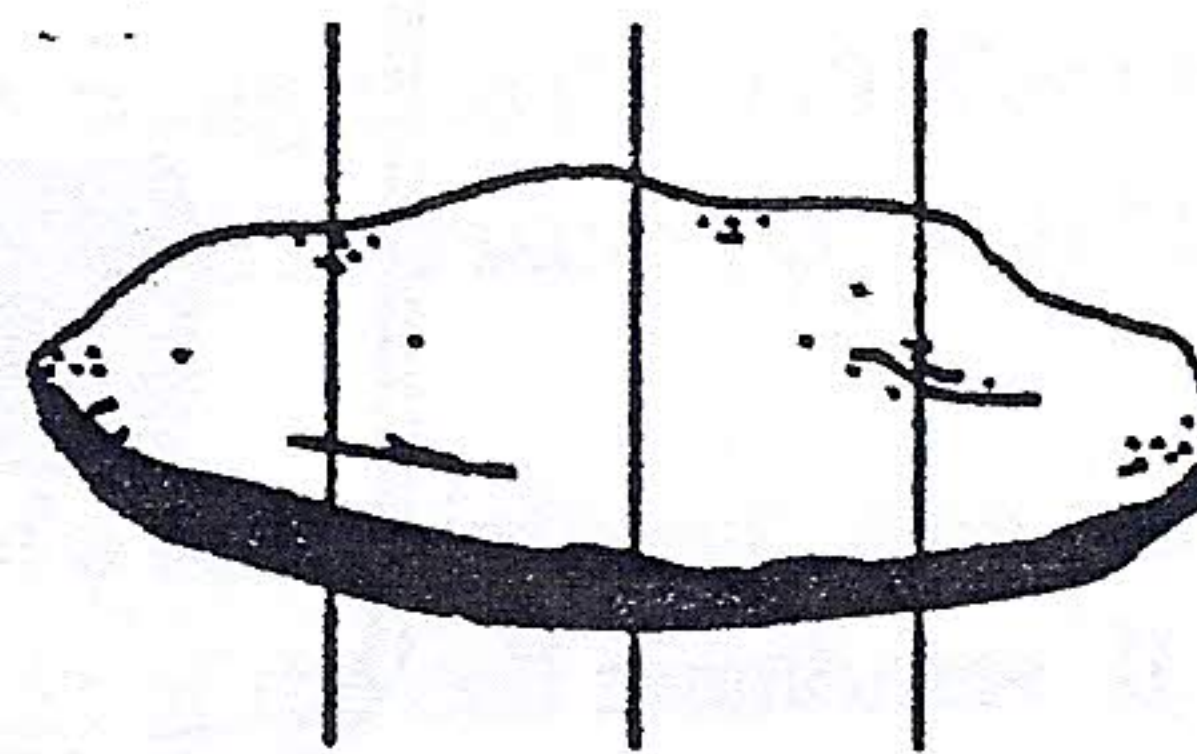
If enough solute is added to the water outside the cells, water will leave the cells, moving from an area of higher water potential to an area of lower water potential. The loss of water from the cells will cause the cells to lose turgor. A continued loss of water will eventually cause the cell membrane to shrink away from the cell wall (plasmolysis).

Procedure

Work in groups. You will be assigned one or more of the beaker contents listed in Table 1.4. For each of these, do the following:

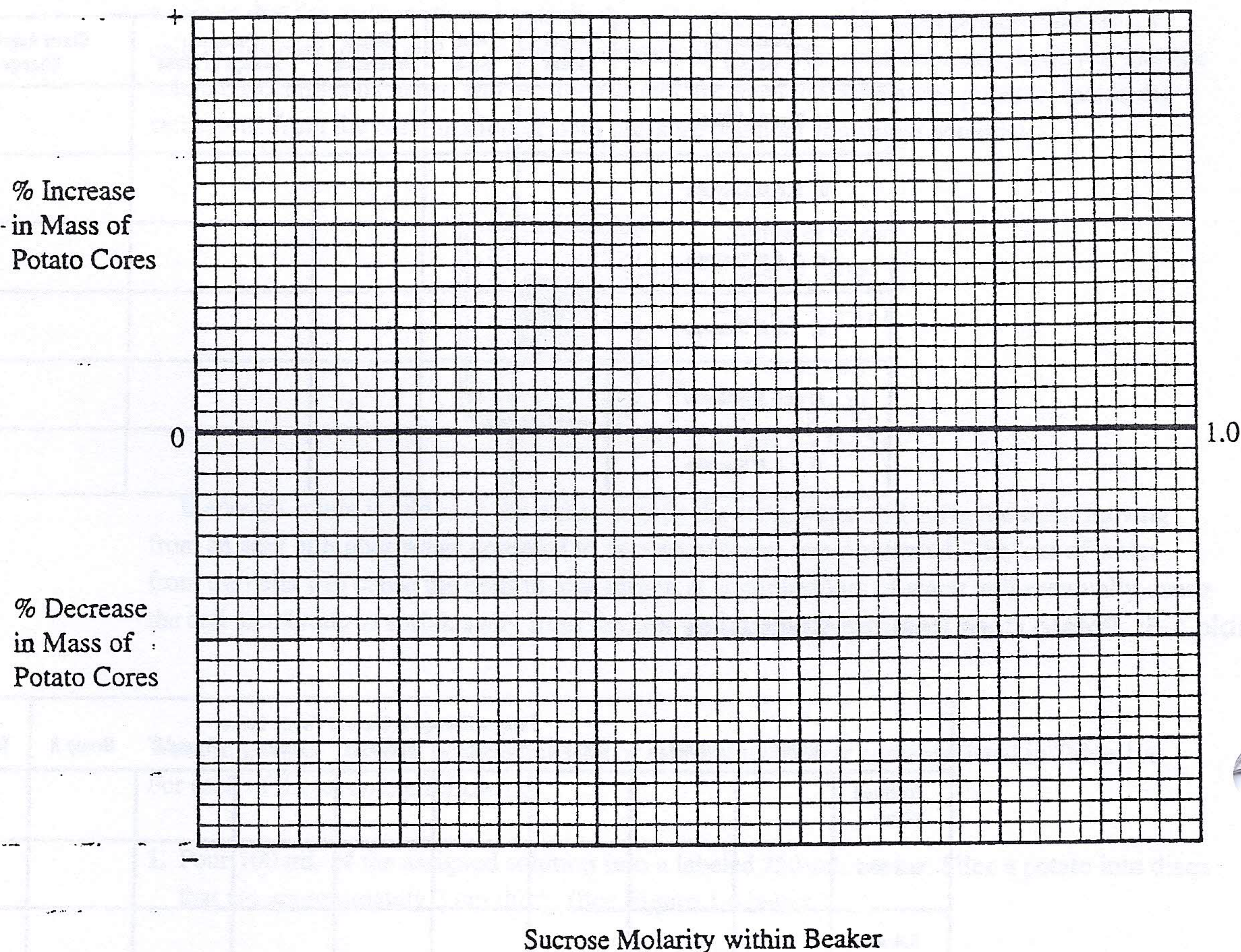
1. Pour 100 mL of the assigned solution into a labeled 250-mL beaker. Slice a potato into discs that are approximately 3 cm thick. (See Figure 1.4 below.)

Figure 1.4



2. Use a cork borer (approximately 5 mm in inner diameter) to cut four potato cylinders. Do not include any skin on the cylinders. You need four potato cylinders for *each* beaker.
3. Keep your potato cylinders in a covered beaker until it is your turn to use the balance.
4. Determine the mass of the four cylinders together and record the mass in Table 1.4. Put the four cylinders into the beaker of sucrose solution.
5. Cover the beaker with plastic wrap to prevent evaporation.
6. Let it stand overnight.
7. Remove the cores from the beakers, blot them gently on a paper towel, and determine their total mass.
8. Record the final mass in Table 1.4 and calculate percentage change as in Exercise 1B. Do this for both your individual results and class average.
9. Graph both your individual data and the class average for the percentage change in mass in Table 1.4.

Graph 1.2: Percent Change in Mass of Potato Cores at Different Molarities of Sucrose



Determine the molar concentration of the potato core. This would be the sucrose molarity in which the mass of the potato cores does not change. To find this, draw the straight line on Graph 1.2 that best fits your data. **The point at which this line crosses the x-axis represents the molar concentration of sucrose with a water potential that is equal to the potato tissue water potential.** At this concentration there is no net gain or loss of water from the tissue. Indicate this concentration of sucrose in the space provided below.

Molar concentration of sucrose = _____ M

EXERCISE 1D: Calculation of Water Potential from Experimental Data

1. The solute potential of this sucrose solution can be calculated using the following formula

$$\Psi_s = -iCRT$$

where i = Ionization constant (for sucrose this is 1.0 because sucrose does not ionize in water)

C = Molar concentration (determined above)

R = Pressure constant ($R = 0.0831$ liter bars/mole $^{\circ}\text{K}$)

T = Temperature $^{\circ}\text{K}$ ($273 + ^{\circ}\text{C}$ of solution)

The units of measure will cancel as in the following example:

A 1.0 M sugar solution at 22°C under standard atmospheric conditions

$$\Psi_s = i \times C \times R \times T$$

$$\Psi_s = -(1)(1.0 \text{ mole/liter})(0.0831 \text{ liter bar/mole } ^{\circ}\text{K})(295 ^{\circ}\text{K})$$

$$\Psi_s = -24.51 \text{ bars}$$

2. Knowing the solute potential of the solution (Ψ_s) and knowing that the pressure potential of the solution is zero ($\Psi_p = 0$) allows you to calculate the water potential of the solution. The water potential will be equal to the solute potential of the solution.

$$\Psi = 0 + \Psi_s \text{ or } \Psi = \Psi_s$$

The water potential of the solution at equilibrium will be equal to the water potential of the potato cells. What is the water potential of the potato cells? Show your calculations here:

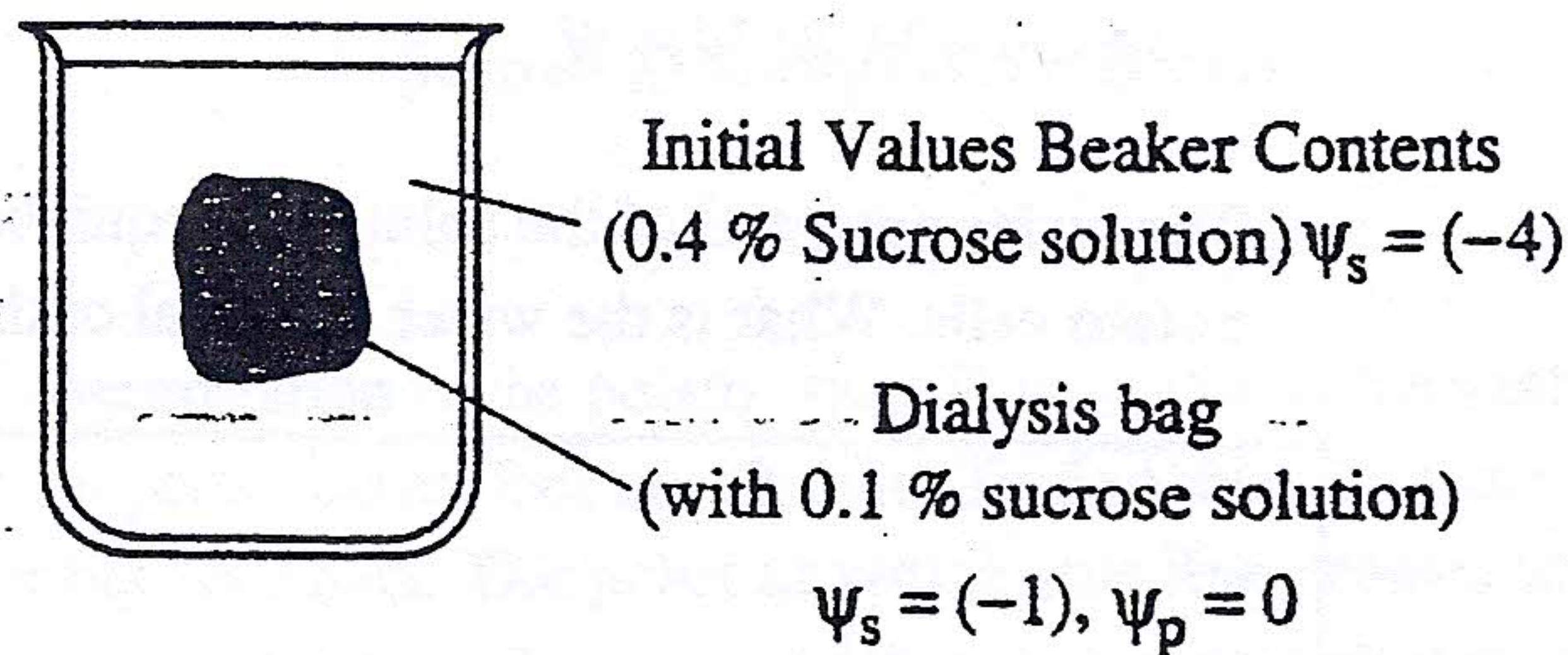
3. Water potential values are useful because they allow us to predict the direction of the flow of water. Recall from the discussion that water flows from an area of higher water potential to an area of lower water potential. For the sake of discussion, suppose that a student calculates that the water potential of a solution inside a bag is -6.25 bar ($\Psi_s = -6.25$, $\Psi_p = 0$) and the water potential of a solution surrounding the bag is -3.25 bar ($\Psi_s = -3.25$, $\Psi_p = 0$). In which direction will the water flow? Water will flow into the bag. This occurs because there are more solute molecules inside the bag (therefore a value further away from zero) than outside in the solution.

Questions

1. If a potato core is allowed to dehydrate by sitting in the open air, would the water potential of the potato cells decrease or increase? Why?

2. If a plant cell has a lower water potential than its surrounding environment and if pressure is equal to zero, is the cell hypertonic (in terms of solute concentration) or hypotonic to its environment? Will the cell gain water or lose water? Explain your response.

Figure 1.5



3. In Figure 1.5, the beaker is open to the atmosphere. What is the pressure potential (ψ_p) of the system?

4. In Figure 1.5 where is the greatest water potential?

beaker dialysis bag

5. Water will diffuse _____ the bag. Why?

into out of

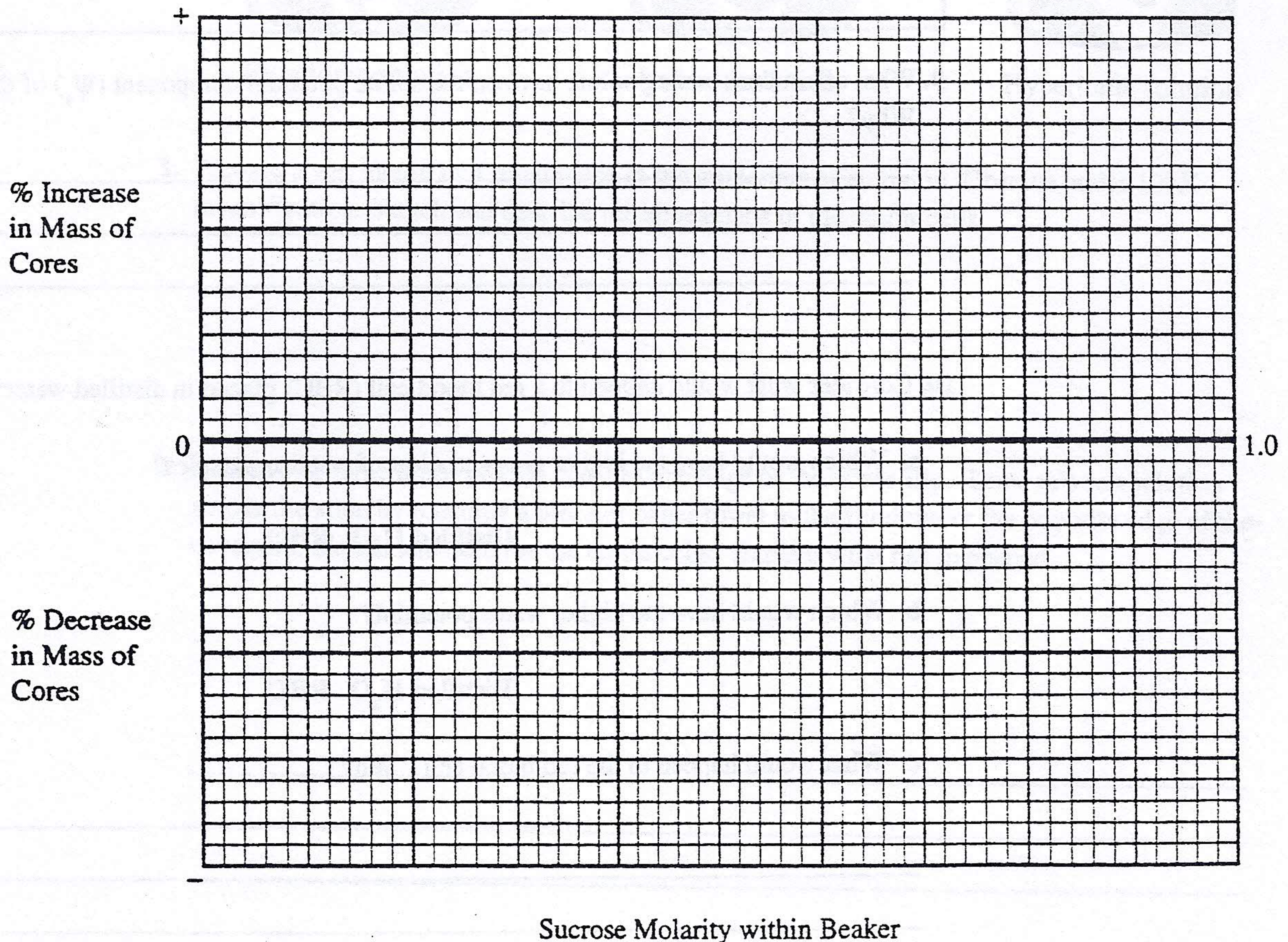
6. Zucchini cores placed in sucrose solutions at 27°C resulted in the following percent changes after 24 hours:

<u>% Change in Mass</u>	<u>Sucrose Molarity</u>
20%	Distilled Water
10%	0.2 M
- 3%	0.4 M
-17%	0.6 M
-25%	0.8 M
-30%	1.0 M

7. a. Graph the results.

Graph Title: _____

Graph 1.3



b. What is the molar concentration of solutes within the zucchini cells? _____

8. Refer to the procedure for calculating water potential from experimental data (page 13).

a. Calculate solute potential (Ψ_s) of the sucrose solution in which the mass of the zucchini cores does not change. Show work here.

b. Calculate the water potential (Ψ) of the solutes within zucchini cores. Show work here.

9. What effect does adding solute have on the solute potential component (Ψ_s) of that solution? Why?

10. Consider what would happen to a red blood cell (RBC) placed in distilled water:

a. Which would have the higher concentration of water molecules?

Distilled H₂O RBC

b. Which would have the higher water potential?

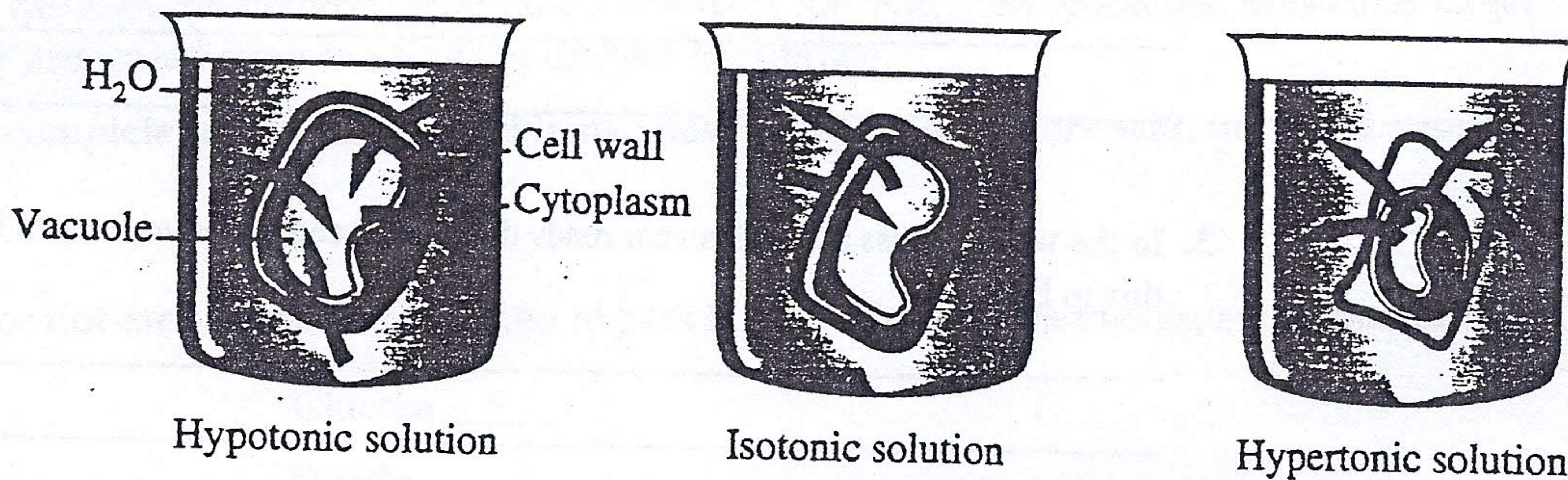
Distilled H₂O RBC

c. What would happen to the red blood cell? Why?

EXERCISE E: Onion Cell Plasmolysis

Plasmolysis is the shrinking of the cytoplasm of a plant cell in response to diffusion of water out of the cell and into a hypertonic solution (high solute concentration) surrounding the cell as shown in the figure below. During plasmolysis the cellular membrane pulls away from the cell wall. In the next lab exercise you will examine the details of the effects of highly concentrated solutions on diffusion and cellular contents.

Figure 1.6



1. Prepare a wet mount of a small piece of the epidermis of an onion. Observe under 100X magnification. Sketch and describe the appearance of the onion cells.
2. Add two or three drops of 15% NaCl to one edge of the cover slip. Draw this salt solution across the slide by touching a piece of paper towel to the fluid under the opposite edge of the coverslip. Sketch and describe the onion cells. Explain what has happened.

3. Remove the cover slip and flood the onion epidermis with fresh water. Observe under 100X. Describe and explain what happened.

34

Analysis of Results

1. What is plasmolysis?

2. Why did the onion cells plasmolyze?

3. In the winter, grass often dies near roads that have been salted to remove ice. What causes this to happen?
